

# CLUB NEWSLETTER

[www.opotikigolf.co.nz](http://www.opotikigolf.co.nz)  
[office@opotikigolf.co.nz](mailto:office@opotikigolf.co.nz)  
07 315 7415 or 027 315 7415



Friday, April 11th 2025



While our regular club competition numbers have been on the lower side lately, it's heartening to see the strong support for tournaments. Whether it's the draw of a big event or the chance to catch up with players from near and far, tournaments continue to bring in great fields and plenty of enthusiasm. We'd love to see that same energy carried into our weekly competitions – so dust off those clubs and come join us!

The **Jack & Gloria Howe Memorial** Stableford Golf Tournament is next Saturday 19<sup>th</sup> April. You can register for this event by putting your name on the sheet in the kiosk room or by contacting the office. An event not to be missed, only \$30pp, which includes an impressive prize table, novelties, a full puku after your round and the chance to win \$300 in a lucky draw!

Our Intermediate & Junior Pennant teams will be playing in the semi-final at Mt Maunganui Golf Course this Sunday. Come along and show your support for our players as they represent the club! Good luck to all team members—swing strong and play well!

## Upcoming Events

**Sun 13th Apr** – Pennants  
*Semi-finals @ Mt Maunganui*

**Fri 18<sup>th</sup> Apr** – **GOOD FRIDAY**

**Sat 19<sup>th</sup> Apr** – Jack & Gloria Howe Memorial  
*Shotgun Start 11am*

**Sun 20<sup>th</sup> Apr** – **EASTER SUNDAY**

**Mon 21<sup>st</sup> Apr** – **EASTER MONDAY**

**Fri 25<sup>th</sup> Apr** – **ANZAC DAY**  
*Course Closed until 12noon*  
*Meat pack Mixed Tournament*

---

## Clubhouse Bookings

**Friday Evenings** – Restaurant  
*Open @ 5.30pm*

*For groups & large bookings, please contact the office to make a reservation. Walkins welcome.*

# JUNIOR GOLF



Congratulations to Waimanawa Robinson for being selected for the Junior Girls Development Quad. Waimanawa will travel with the team from Tauranga to Waiuku tomorrow, 12<sup>th</sup> April. The team will play 3 rounds over 3 days of handicap matchplay competing against Waikato, Auckland, and North Harbour.

Waimanawa's handicap index is 2.4. A great achievement which could lead to more opportunities in the future. We wish Waimanawa all the best in her selection. Well done, Waimanawa.



## HOUSE KEEPING



### Reminder: Green Fees Must Be Paid

We'd like to remind all members that every non-member must pay the appropriate green fee before playing. The Committee is aware that this continues to be an ongoing issue, and Kieran has been doing a great job keeping an eye on things and enforcing the requirements.

However, it's not just up to him — if you're bringing a guest or playing alongside someone who isn't a member, **it is your responsibility to ensure they have paid before stepping onto the course.**

It's important to remember that our club relies heavily on volunteers and the generous contributions of members to keep things running – from maintaining the course to organising events and looking after the clubhouse.

Allowing non-paying players to use the course without contributing is not only unfair to our members, but it also undermines the time, & effort that so many put in behind the scenes.

The honesty system only works when we all do our part – let's help keep the club running smoothly and fairly for everyone.

# COURSE UPDATE

Much needed rain, but the 110mm odd we got was a bit overboard! Good conditions for Fairy rings. Course weathered storm OK, just minor debris, but parts of the lower tier on the new No 6 was flooded badly enough to close it. We have undertaken some re-medial work for hopefully a fix and the green should be open by the time you read this.



We are now mowing as for other greens. Members will need to be patient as there is still a fair amount of follow up work to do. In the meantime, one club length relief in the 'general area' when playing No 6 will remain until further notice.

The swale along No 1 constructed by ODC seemed to cope with the stormwater, a great improvement to minimise flooding across the No 1 fairway. That along with the improved stormwater trap adjacent to the No 3 white tee, meant less flooding on No 3 fairway after the downpour. Let's hope those fixes continue to improve conditions through winter.

Many thanks for all those that turned up on the Saturday of greens renovation week, and to those that picked up all of Kieran's tree leavings. A few technical issues with coring this year, mostly resolved but they did prolong the work required. The general order of operations was: Verticut, core, clean greens and sand (some 35-40 m<sup>3</sup>) to fill core holes, vertidrain, re-sand where required, over sow, brush, and fertilise with a slow-release product, irrigate, leave for 5-6 days and mow at higher cut to allow root recovery and germinating seed some space. We are now stepping down mowing height and members should see green speed improving. Course closure may be an inconvenience for golfers but an absolute must for greens management through the year. Some will have noticed we used our Vertidrain machine (not the old Procore) for coring this year with a core collector that Charlie Hayes fabricated for us. Worked well Charlie, thank you, have you patented it! Overall, a reasonable result and recovery from coring.

Next up is putting in some tracks along the drain from the No 6 path to the No 7 fairway. This is a perennial wet area in winter. Also, a permanent cart park area just across the bridge for Donga hole, approximately where the roped off area is currently. Planning for this is in progress.

We are currently renovating the practice green to fix some undulations and bring the green back up to a better standard, so please keep off until further notice. Apart from being a backup short par 3, we see future use for putting and close chipping practice only. The practice fairway, with spaced flags is there for fuller shots. As always ensure pitch marks on greens and divots on fairways are repaired.

Lastly, volunteers needed (1) for the roller roster, we are one short (see Kieran if interested); (2) to maintain the penalty peg lines; and if looking for something to do don't hesitate to spend the odd hour picking up tree debris.

All the best for autumn and winter comps.

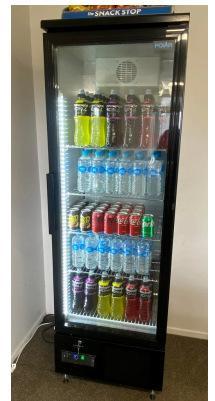


## Funding Awarded for Essential Equipment Upgrades!

We are thrilled to share some fantastic news with you! Thanks to a generous funding award from Trust Horizon, we've successfully secured the necessary resources to upgrade several key appliances and systems that will greatly enhance our facilities.

With this funding, we have been able to upgrade the following equipment:

- Kitchen Refrigerator
- Office Refrigerator
- Electric Deep Fryer
- Two Heat Pumps



These improvements will help us maintain a high standard of service and comfort for everyone in our community. The upgraded appliances will not only improve efficiency but also ensure a more energy-efficient and sustainable environment.

We are excited about these upgrades and appreciate your continued support. We're grateful to **Trust Horizon** for making these much-needed improvements possible. Stay tuned for more updates as we continue to enhance our facilities!

